

 **Stopl**

Stoplook.
Application

Modified:
16/06/99 1

Size: 2,640

 eio.dll

 o_1.avi

 driver.rsr

 2_1.avi

 p7.app

STOP
LOOK and
LISTEN

an interactive guide to
working with communities

credits exit copyright © 1999 begin

instructions

Click on the various icons and buttons to find out more about them. When you're finished, click on the "map" button and choose one of the steps to leave this section of the programme.



Traffic Light Icon



Reference Icon



Test Icon

Click Here

Hypertext



Hand Cursor

Clicking and Dragging

Some sections ask you to choose a correct word or picture and drag it into the appropriate space. This means click on the object and hold the mouse button down while you move it to the correct spot. When you are done, release the mouse button. Drag the word "test" to the box on the right for practice.

To EXIT this "instructions" section, click on the **Map** button in the lower left hand corner of the screen.

Test



Back

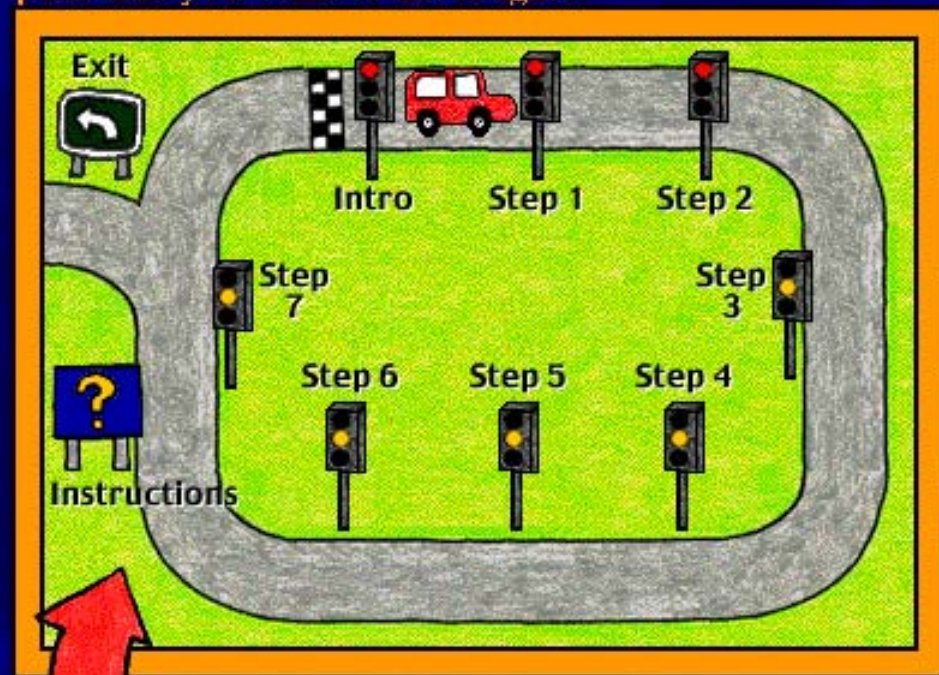
Address

step 1

step 1 getting started

menu

In this step, the community is defined and described in general terms. Key organizations, agencies, people and networks are identified. Click on the street light for the path that you want to investigate.



iefs about communities

ay?

community

community?

with nurse,
y?

map

back

continue

menu

Back

Address

step 1

step 1 getting started

menu

In this step, the community is defined and described in general terms. Key organizations, agencies, people and networks are identified. Click on the street light for the path that you want to investigate.



check out your values and beliefs about communities



what is a "community" anyway?



get some facts about this community



what do people say about this community?



what does Kim, the public health nurse, know about this community?



timeline for step 1



Stopl

Stoplook.
ApplicationModified:
16/06/99 1

Size: 2,640

2.57MB

My Computer

Start

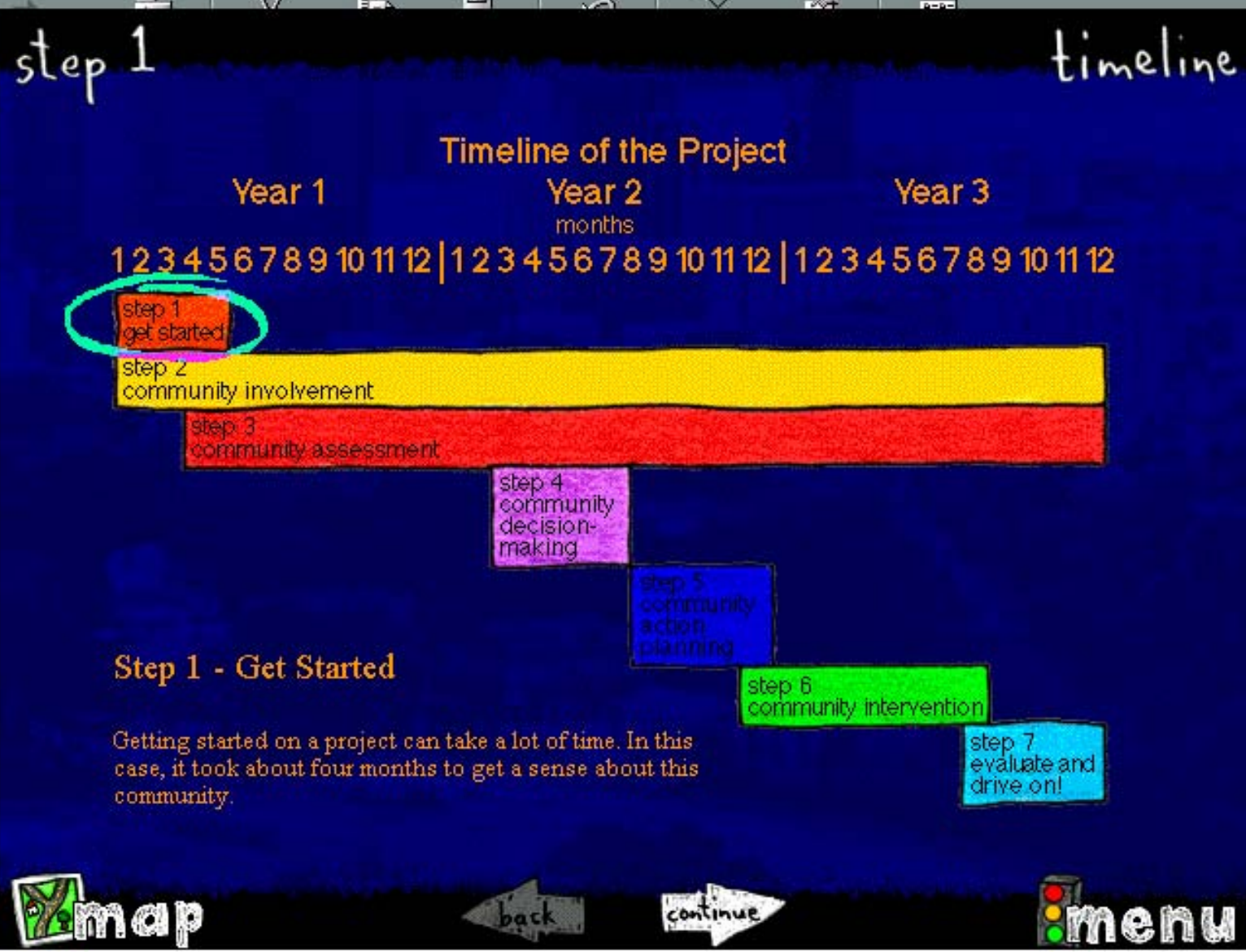


intro

step 1



10:20 AM



Stoplook.
Application
Modified: 16/06/99 1
Size: 2,640

eo.dll
o_1.avi
driver.rsr
2_1.avi
p7.app

step 3

community assessment guide

This section will introduce you to methods
which can be used to gather new information.

Community Components	Windshield Survey	Mapping	Key Informants	Open Forum	Focus Groups	Visioning	Population Survey
Population 	✓	✓					
Education 	✓	✓	✓			✓	✓
Economics 	✓	✓	✓				
Physical Environment 	✓	✓	✓	✓	✓		
Social Services 	✓	✓	✓	✓			
Health 	✓	✓	✓		✓		
Community Dynamics 	✓		✓	✓	✓	✓	
Social Support Networks 	✓	✓	✓	✓	✓		
Individual Capacity 			✓	✓	✓		



step 3

principles revisited

Take a minute to test your understanding of the principles discussed in Steps 1 and 2 of the programme.

One set of principles relates to primary health care. Any process of successful community action should be based on these principles.

Check if the statement is true or false?

Primary health care is integrated with social and economic development.



true



false



- 1
- 2
- 3
- 4
- 5
- 6

step 3

how do you know?

How do you know you have assessed the community enough?

Before deciding whether you can leave the assessment stage and move on, ask yourself...

Criteria for an effective participatory community assessment

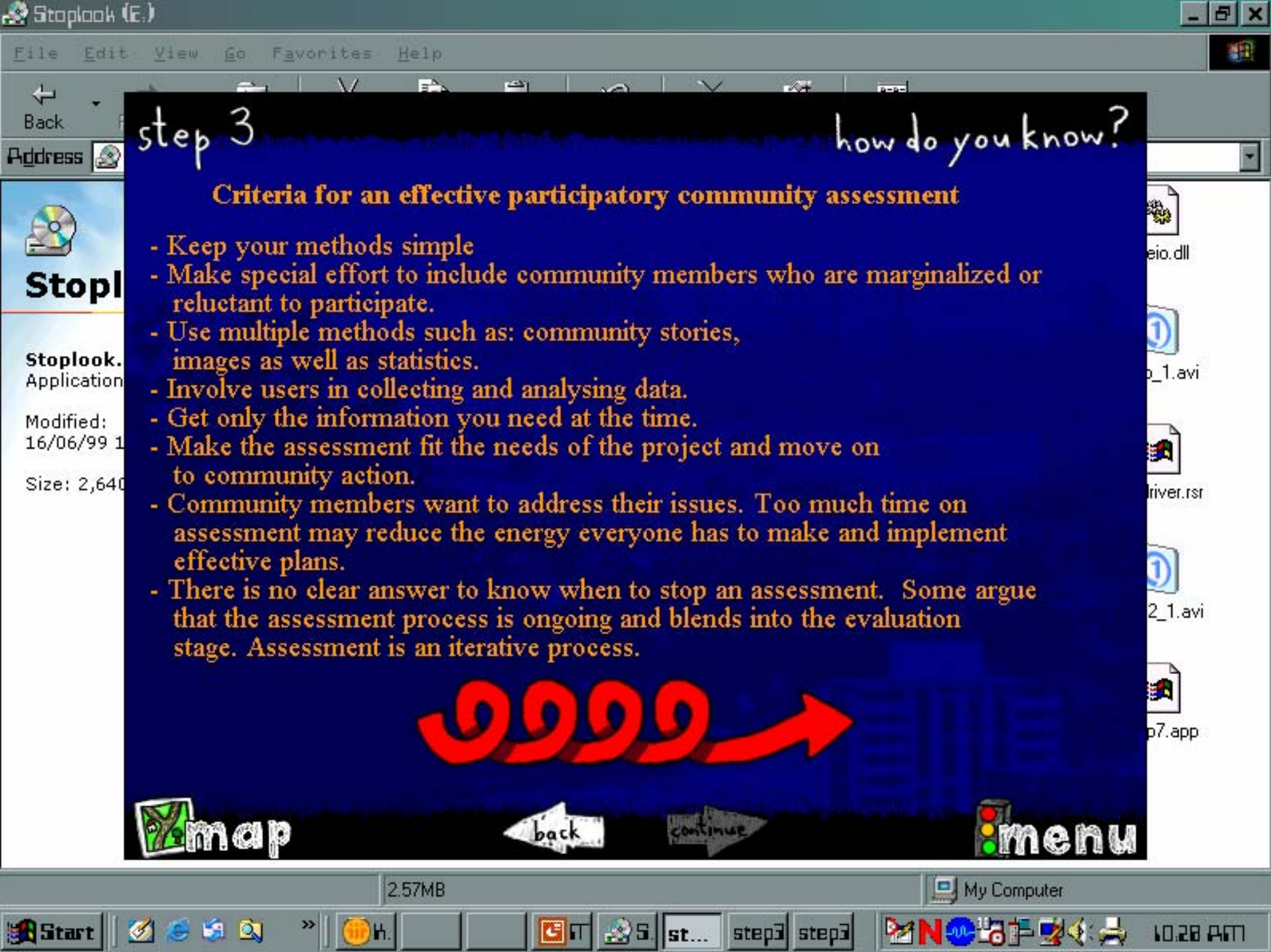


step 3

how do you know?

Criteria for an effective participatory community assessment

- Keep your methods simple
- Make special effort to include community members who are marginalized or reluctant to participate.
- Use multiple methods such as: community stories, images as well as statistics.
- Involve users in collecting and analysing data.
- Get only the information you need at the time.
- Make the assessment fit the needs of the project and move on to community action.
- Community members want to address their issues. Too much time on assessment may reduce the energy everyone has to make and implement effective plans.
- There is no clear answer to know when to stop an assessment. Some argue that the assessment process is ongoing and blends into the evaluation stage. Assessment is an iterative process.



Back

Address



Stopl

Stoplook.
ApplicationModified:
16/06/99 1

Size: 2,640

step 7

process, impact and outcome

what do we evaluate?

The coalition sub-committees developed indicators for success of each of the programmes. They can be categorized as process, impact and outcome indicators.



Process Indicators

Impact Indicators

Outcome Indicators

Click here for an analogy.



Click here to test yourself on your understanding of the three types of programme evaluation.



2.57MB

My Computer

- 1
- 2
- 3
- 4
- 5
- 6
- 7
- 8
- 9

step 7 process, impact and outcome

Drag the type of evaluation to the box to complete the sentence below.

An educational programme was set up to teach parents of young children about road safety. A survey was conducted to find out how satisfied the parents were with the programme.

This is considered evaluation.

process

impact

outcome



step 7

epilogue

Click on each initiative to see the final results.

KIDestrians programme

Speed bumps initiative

Rail Trail initiative



